

# QUICK GUIDE GLUNOVO FLASH

## FLASH GLUCOSE MONITORING SYSTEM

IMPORTANT: if you are using Glunovo Flash FGM please use these instructions

**Glunovo<sup>®</sup> Flash**  
Flash Glucose Monitoring System

### 1. Download the Glunovo E2s app from the App Store or Google Play.

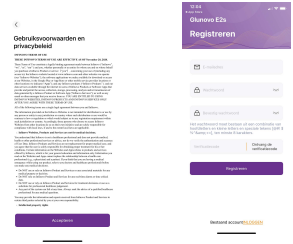


### 2. Mobile phone settings

- Enable Bluetooth.
- Authorise notifications
  - Android; give permission to always allow location (not when using app only).
  - Android: give permission to use memory.
  - Make sure the app is always running in the background.
  - Re-enable the app when you restart your phone.
  - Do not activate battery-saving function or do not disturb function.

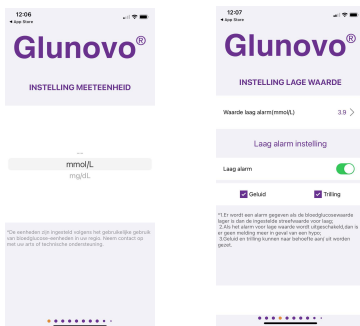
### 3. Create an account

You need to create an account in the app with your email address and password. Using the same email/password combination, you will also log in to **glunovoshare.com** for extensive reports and trends and to share your data.



### 4. Set unit of measurement and threshold values

Select your country's unit of measurement (in NL mmol/L). Set your threshold high and low. Select alarm on or off) and the alarm notification (sound and/or vibration).



### 5. Choose sensor location

Select a site in the abdominal area. If desired, clean the skin with an alcohol wipe and allow to dry thoroughly.

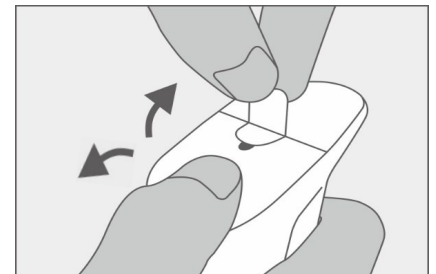


Place sensor 5cm outside the belly button and 5cm outside the insulin injection site.

*Do not use product if packaging is past due or damaged.*

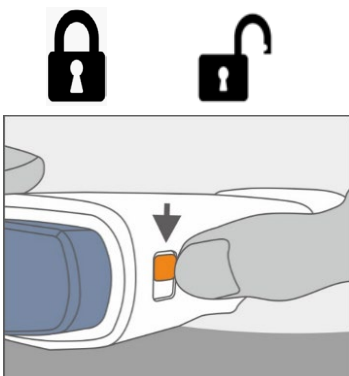
### 6. Remove protective layers

Carefully remove the protective layers and do not touch the adhesive part.



### 7. Unlock applicator

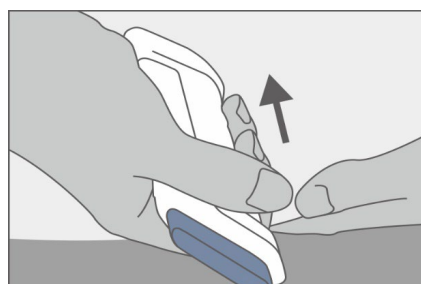
Hold the applicator and slide the orange button towards the release symbol.



### 8. Place applicator

Place the applicator horizontally on the abdomen.

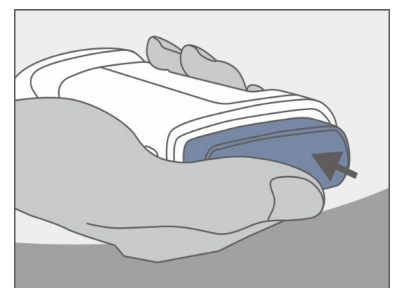
Push to make sure the adhesive part is firmly attached.



### 9. Insert sensor

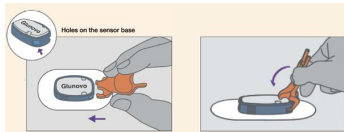
Press the top button and the sensor is automatically inserted. Gently pull up the applicator.

Press the edges of the sensor patch.



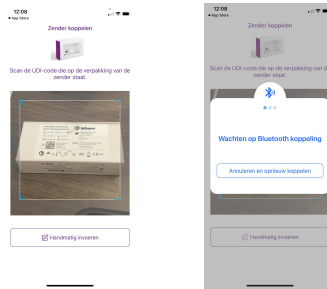
## 10. Transmitter application

The orange key is used to attach the transmitter. The transmitter has one pointed side and one side with 2 notches. Place the pointed side first and then push the other side down. On the short side of the sensor edge are two holes. In these 2 holes, insert the 2 bent teeth. Then move downwards in the direction of the transmitter. See also illustration. You should hear the transmitter click into place.



## 11. Transmitter pairing

From the app, please scan the UDI code on the transmitter package. Your transmitter will be paired automatically. (Give the app access to the camera)



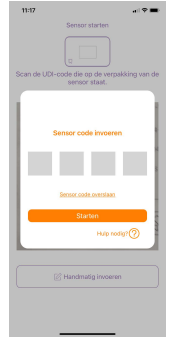
**Keep the transmitter packaging** or take a picture of the label, should manual code entry be necessary or in case of a product problem.

## 12. Sensor pairing

Please scan the UDI code of the sensor package you used. The 4 digits of the factory calibration code (Sensor Code) are filled out automatically. Please cross-check on the sensor packaging.

### Select START

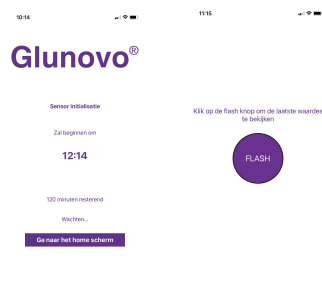
Please do not select 'skip factory calibration code'. This results in having to calibrate the sensor daily.



## 13. Initialisation time

After START, the initialisation or warm-up time starts automatically. This takes 2 hours (120 min).

After these 2 hours - after pressing the Flash button - you will see your glucose values in the app.



## 14. Glunovo E2s app menu

In the Home screen, you will see the most recent value with a trend arrow. In the app, you can enter a calibration value (if needed), view reports, enter events and adjust alarm settings, among other things.

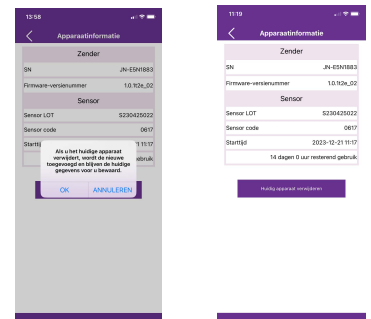


## 15. End of sensor period

After 14 days, the sensor period is over. You will be notified in advance via the app to replace.

Go to Settings

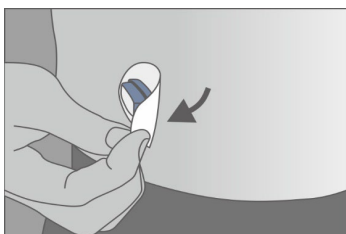
→ Device information → Replace current sensor .



## 16. Sensor removal

It is advised to remove the sensor at the same time as the transmitter.

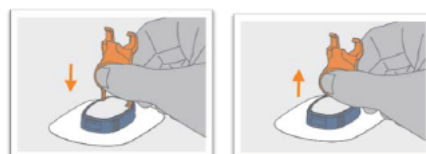
**Do not throw away your transmitter! It can be used up to 3 years.**



## 17. Disconnecting transmitter from sensor

Use the straight side of the orange key and push the tips of the key into the notches of the transmitter. Use the key to pull the transmitter up out of the sensor. The sensor can be disposed of with household waste.

**Do not throw away the transmitter!**



## 18. Starting a new sensor period

Follow the steps in the app and/or go back to step 5 of this Quick Guide.

For detailed instructions, please refer to the manual in the package or the instruction video.

The instruction video and other product information can be found on our website:

[www.glunovoflash.nl](http://www.glunovoflash.nl)